

Journal of Cell and Animal Biology

Volume 9 Number 4, September, 2015

ISSN 1996-0867



*Academic
Journals*

ABOUT JCAB

The **Journal of Cell and Animal Biology (JCAB)** (ISSN 1996-0867) is published Monthly (one volume per year) by Academic Journals.

Journal of Cell and Animal Biology (JCAB) provides rapid publication (monthly) of articles in all areas of cell and animal biology such as Cellular metabolism, Cellular differentiation, Alcoholic fermentation etc. All articles published in JCAB are peer-reviewed.

Submission of Manuscript

Please read the **Instructions for Authors** before submitting your manuscript. The manuscript files should be given the last name of the first author

[Click here to Submit manuscripts online](#)

If you have any difficulty using the online submission system, kindly submit via this email jcab@academicjournals.org.

With questions or concerns, please contact the Editorial Office at jcab@academicjournals.org.

Editor

Hamada Mohamed Mahmoud

*Co-Editor
Biology Department
School of Science and Engineering
American University in Cairo
Egypt*

N. John Tonukari, Ph.D

*Co-Editor
Department of Biochemistry
Delta State University
PMB 1
Abraka, Nigeria*

Associate Editors

Gobianand Kuppannan

*Animal Biotechnology Division,
Laboratory of Biomedicine,
National Institute of Animal Sciences uwon,
Seoul,
South Korea*

Dr. Sumanta Nandi

*Associate Editor
National Institute of Animal Nutrition and
Physiology,
Adugodi Post,
Bangalore-30 Karnataka,
India.*

Editorial Board

Dr. Amit Kumar

*Department of Microbiology & Immunology,
Pandit Deen Dayal Upadhyay Pashu Chikitsa Vigyan
Vishwavidyalay Evum
Go-Anusandhan Sansthan (DUVASU) Mathura, UP.*

Dr.Ksh. Birla Singh

*Department of Zoology
PUC, MZU, Aizawl,
India*

Dr. I. Anand Shaker

*Department of Biochemistry
Melmaruvathur Adhiparasakthi Institute of Medical
Sciences, (MAPIMS)
Melmaruvathur-603319, Chennai Tamil Nadu,
India.*

Prof. Andrea Junqueira

*Junqueira Federal University of Rio de Janeiro
Institute,
Brazil.*

Dr. Ausraful Islam

*Health Systems and Infectious Diseases Division,
International Centre for Diarrhoeal Disease Research,
Bangladesh*

Dr. Martinez Herrera David

*Facultad de Medicina Veterinaria y Zootecnia,
Universidad Veracruzana,
Mexico*

Assoc. Prof. Kyan Allahdadi

*University of North Texas Health Science Center,
United States of America*

Dr. Luciana Calábria

*Federal University of Uberlândia,
Brazil.*

Prof. Tarek Ali

*Biochemistry Division,
Chemistry Department,
Faculty of Science.
Tanta University,
Egypt.*

Dr. Carlos Hiroo Saito

*University of Brasilia,
Brazil.*

Dr. Ksenija Nestic

*Institute of Veterinary Medicine,
Serbia.*

Dr. Vassilis Papatsiros

*Faculty of Veterinary Medicine, University of
Thessaly
Greece*

Prof. Haijun Huang

*Wuhan Academy of Agricultural Science and
Technology,
China.*

Prof. Ming Zhang

*Zhejiang University,
China*

Prof. Yang Gongshe

*College of Animal Science and Technology,
Northwest A&F University,
China.*

V. Rajendran

*Centre for Nanoscience and Technology,
Tamilnadu,
India.*

Dr. Abiodun Adeyemo

*Niger Delta University,
Wilberforce Island,
Bayelsa State,
Nigeria.*

Dr. Azhar Ahmed Al- Moussawi

*Iraq Natural History Museum,
Baghdad University,
Baghdad,
Iraq.*

Dr. Sowemimo Oluyomi

*Department of Zoology,
Obafemi Awolowo University,
Ile – Ife,
Osun State,
Nigeria.*

Asst. Prof. Hung-Chuan Pan

*Department of Neurosurgery,
Taichung Veterans General Hospital,
Taichung,
Taiwan.*

Dr. Mahmoud Lotfy

*Minufiya University,
Egypt and Jouf University,
KSA,
Egypt.*

Dr. Farhad Mirzaei

*National Dairy Research Institute,
Deemed University,
Karnal,
India*

Kyan Allahdadi

*University of North Texas, Health Science Center,
USA.*

Luciana Calábria

Federal University of Uberlândia, Brazil.

Mehdi Taghinejad

*Tabriz branch,
Islamic Azad University,
Iran.*

Arturo Juarez

*Faculty of Veterinary Medicine, University of
Durango,
Mexico.*

Haijun Huang

*Wuhan Academy of Agricultural Science and
Technolog,
China.*

Ming Zhang

*Zhejiang University,
China.*

Ksenija Nestic

*Serbia Institute of Veterinary Medicine,
Serbia.*

Yi-Jang Lee

*National Yang-Ming University, Taiwan,
ROC.*

Zhangping

College of Stomatology, Sichuan University, P. R. China.

Muftah Ali

Department of Parasitology, Faculty of Medicine, University of Garyounis, Benghazi-Libya, Libya.

Kálmán Imre

Faculty of Veterinary Medicine, Banat University of Agricultural Sciences and Veterinary Medicine, Romania

Orji Frank Anayo

Department of Microbiology, Abia state University, Nigeria.

Aggad Hebib

University of Tiaret, Algeria.

Okon Kenneth

University of Maiduguri Teaching Hospital, Maiduguri, Nigeria.

Carlos Augusto Ferreira de Andrade

Clinical Epidemiology Laboratory, Evandro Chagas Clinical Research Institute (IPEC), Oswaldo Cruz Foundation (Fiocruz), Rio de Janeiro, Brazil.

Reynoso, David

University of Texas, M. D. Anderson Cancer Center, United States of America

Thomas Dorlo

Div. Infectious Diseases, Academic Medical Center, Amsterdam, Netherlands.

Jair Alexander Téllez Meneses

Universidade Federal de Santa Catarina, Colombia.

Pedro Henrique Viadanna

Universidade de São Paulo, Brazil.

Wu, Albert

Mt. Sinai School of Medicine, USA.

V. Rajendran

Centre for Nanoscience and Technology, K. S. Rangasamy College of Technology, India.

Wong Tin Wui

Universiti Teknologi Mara, Malaysia.

Nitar Nwe

Dukkha Life Science Laboratory, Thanlyin, Yangon, Myanmar.

Rosana Sandler

Universidad Nacional de Lujan, Argentina.

Dr. Abdulrahman Saad Aldawood

Assistant of Vice Rector for Development and Quality, Saudi Arabia.

Stanescu Minodora

Institute of Biology, Romania.

Gabriela Castaño

Universidad Nacional Autónoma de México (UNAM), Mexico.

Instructions for Author

Electronic submission of manuscripts is strongly encouraged, provided that the text, tables, and figures are included in a single Microsoft Word file (preferably in Arial font).

The **cover letter** should include the corresponding author's full address and telephone/fax numbers and should be in an e-mail message sent to the Editor, with the file, whose name should begin with the first author's surname, as an attachment.

Article Types

Three types of manuscripts may be submitted:

Regular articles: These should describe new and carefully confirmed findings, and experimental procedures should be given in sufficient detail for others to verify the work. The length of a full paper should be the minimum required to describe and interpret the work clearly.

Short Communications: A Short Communication is suitable for recording the results of complete small investigations or giving details of new models or hypotheses, innovative methods, techniques or apparatus. The style of main sections need not conform to that of full-length papers. Short communications are 2 to 4 printed pages (about 6 to 12 manuscript pages) in length.

Reviews: Submissions of reviews and perspectives covering topics of current interest are welcome and encouraged. Reviews should be concise and no longer than 4-6 printed pages (about 12 to 18 manuscript pages). Reviews are also peer-reviewed.

Review Process

All manuscripts are reviewed by an editor and members of the Editorial Board or qualified outside reviewers. Authors cannot nominate reviewers. Only reviewers randomly selected from our database with specialization in the subject area will be contacted to evaluate the manuscripts. The process will be blind review.

Decisions will be made as rapidly as possible, and the journal strives to return reviewers' comments to authors as fast as possible. The editorial board will re-review manuscripts that are accepted pending revision. It is the goal of the AJFS to publish manuscripts within weeks after submission.

Regular articles

All portions of the manuscript must be typed double-spaced and all pages numbered starting from the title page.

The Title should be a brief phrase describing the contents of the paper. The Title Page should include the authors' full names and affiliations, the name of the corresponding author along with phone, fax and E-mail information. Present addresses of authors should appear as a footnote.

The Abstract should be informative and completely self-explanatory, briefly present the topic, state the scope of the experiments, indicate significant data, and point out major findings and conclusions. The Abstract should be 100 to 200 words in length. Complete sentences, active verbs, and the third person should be used, and the abstract should be written in the past tense. Standard nomenclature should be used and abbreviations should be avoided. No literature should be cited.

Following the abstract, about 3 to 10 key words that will provide indexing references should be listed.

A list of non-standard **Abbreviations** should be added. In general, non-standard abbreviations should be used only when the full term is very long and used often. Each abbreviation should be spelled out and introduced in parentheses the first time it is used in the text. Only recommended SI units should be used. Authors should use the solidus presentation (mg/ml). Standard abbreviations (such as ATP and DNA) need not be defined.

The Introduction should provide a clear statement of the problem, the relevant literature on the subject, and the proposed approach or solution. It should be understandable to colleagues from a broad range of scientific disciplines.

Materials and methods should be complete enough to allow experiments to be reproduced. However, only truly new procedures should be described in detail; previously published procedures should be cited, and important modifications of published procedures should be mentioned briefly. Capitalize trade names and include the manufacturer's name and address. Subheadings should be used. Methods in general use need not be described in detail.

Results should be presented with clarity and precision. The results should be written in the past tense when describing findings in the authors' experiments. Previously published findings should be written in the present tense. Results should be explained, but largely without referring to the literature. Discussion, speculation and detailed interpretation of data should not be included in the Results but should be put into the Discussion section.

The Discussion should interpret the findings in view of the results obtained in this and in past studies on this topic. State the conclusions in a few sentences at the end of the paper. The Results and Discussion sections can include subheadings, and when appropriate, both sections can be combined.

The Acknowledgments of people, grants, funds, etc should be brief.

Tables should be kept to a minimum and be designed to be as simple as possible. Tables are to be typed double-spaced throughout, including headings and footnotes. Each table should be on a separate page, numbered consecutively in Arabic numerals and supplied with a heading and a legend. Tables should be self-explanatory without reference to the text. The details of the methods used in the experiments should preferably be described in the legend instead of in the text. The same data should not be presented in both table and graph form or repeated in the text.

Figure legends should be typed in numerical order on a separate sheet. Graphics should be prepared using applications capable of generating high resolution GIF, TIFF, JPEG or Powerpoint before pasting in the Microsoft Word manuscript file. Tables should be prepared in Microsoft Word. Use Arabic numerals to designate figures and upper case letters for their parts (Figure 1). Begin each legend with a title and include sufficient description so that the figure is understandable without reading the text of the manuscript. Information given in legends should not be repeated in the text.

References: In the text, a reference identified by means of an author's name should be followed by the date of the reference in parentheses. When there are more than two authors, only the first author's name should be mentioned, followed by 'et al'. In the event that an author cited has had two or more works published during the same year, the reference, both in the text and in the reference list, should be identified by a lower case letter like 'a' and 'b' after the date to distinguish the works.

Examples:

Abayomi (2000), Agindotan et al. (2003), (Kelebeni, 1983), (Usman and Smith, 1992), (Chege, 1998;

1987a,b; Tijani, 1993,1995), (Kumasi et al., 2001)
References should be listed at the end of the paper in alphabetical order. Articles in preparation or articles submitted for publication, unpublished observations, personal communications, etc. should not be included in the reference list but should only be mentioned in the article text (e.g., A. Kingori, University of Nairobi, Kenya, personal communication). Journal names are abbreviated according to Chemical Abstracts. Authors are fully responsible for the accuracy of the references.

Examples:

Chikere CB, Omoni VT and Chikere BO (2008). Distribution of potential nosocomial pathogens in a hospital environment. *Afr. J. Biotechnol.* 7: 3535-3539.

Moran GJ, Amii RN, Abrahamian FM, Talan DA (2005). Methicillinresistant *Staphylococcus aureus* in community-acquired skin infections. *Emerg. Infect. Dis.* 11: 928-930.

Pitout JDD, Church DL, Gregson DB, Chow BL, McCracken M, Mulvey M, Laupland KB (2007). Molecular epidemiology of CTXM-producing *Escherichia coli* in the Calgary Health Region: emergence of CTX-M-15-producing isolates. *Antimicrob. Agents Chemother.* 51: 1281-1286.

Pelczar JR, Harley JP, Klein DA (1993). *Microbiology: Concepts and Applications*. McGraw-Hill Inc., New York, pp. 591-603.

Short Communications

Short Communications are limited to a maximum of two figures and one table. They should present a complete study that is more limited in scope than is found in full-length papers. The items of manuscript preparation listed above apply to Short Communications with the following differences: (1) Abstracts are limited to 100 words; (2) instead of a separate Materials and Methods section, experimental procedures may be incorporated into Figure Legends and Table footnotes; (3) Results and Discussion should be combined into a single section.

Proofs and Reprints: Electronic proofs will be sent (e-mail attachment) to the corresponding author as a PDF file. Page proofs are considered to be the final version of the manuscript. With the exception of typographical or minor clerical errors, no changes will be made in the manuscript at the proof stage.

Fees and Charges: Authors are required to pay a \$550 handling fee. Publication of an article in the Journal of Cell and Animal Biology is not contingent upon the author's ability to pay the charges. Neither is acceptance to pay the handling fee a guarantee that the paper will be accepted for publication. Authors may still request (in advance) that the editorial office waive some of the handling fee under special circumstances

Copyright: © 2015, Academic Journals.

All rights Reserved. In accessing this journal, you agree that you will access the contents for your own personal use but not for any commercial use. Any use and or copies of this Journal in whole or in part must include the customary bibliographic citation, including author attribution, date and article title.

Submission of a manuscript implies: that the work described has not been published before (except in the form of an abstract or as part of a published lecture, or thesis) that it is not under consideration for publication elsewhere; that if and when the manuscript is accepted for publication, the authors agree to automatic transfer of the copyright to the publisher.

Disclaimer of Warranties

In no event shall Academic Journals be liable for any special, incidental, indirect, or consequential damages of any kind arising out of or in connection with the use of the articles or other material derived from the JCAB, whether or not advised of the possibility of damage, and on any theory of liability.

This publication is provided "as is" without warranty of any kind, either expressed or implied, including, but not limited to, the implied warranties of merchantability, fitness for a particular purpose, or non-infringement. Descriptions of, or references to, products or publications does not imply endorsement of that product or publication. While every effort is made by Academic Journals to see that no inaccurate or misleading data, opinion or statements appear in this publication, they wish to make it clear that the data and opinions appearing in the articles and advertisements herein are the responsibility of the contributor or advertiser concerned. Academic Journals makes no warranty of any kind, either express or implied, regarding the quality, accuracy, availability, or validity of the data or information in this publication or of any other publication to which it may be linked.

ARTICLES

Postnatal development of the vagina in West African dwarf goat (*Capra hircus*)

Clifford Nwabugwu ABIAEZUTE and Innocent Chima NWAOGU

Full Length Research Paper

Postnatal development of the vagina in West African dwarf goat (*Capra hircus*)

Clifford Nwabugwu ABIAEZUTE* and Innocent Chima NWAOGU

Department of Veterinary Anatomy, Faculty of Veterinary Medicine, University of Nigeria, Nsukka, Enugu State, Nigeria.

Received 16 June, 2015; Accepted 10 August, 2015

The postnatal developmental pattern of the vagina of WAD goat from birth to week 28 was investigated by gross and light microscopy. Forty five (45) female WAD goat kids were used in this study and were divided into nine groups of five goat kids per group. Each goat was euthanized, the vagina dissected out and studied, the length and weight measured. Data obtained were analysed by analysis of variance and Duncan's new multiple range test with values of $p < 0.05$ considered significant. The tissues were fixed in Bouin's fluid and routinely processed for histology. At birth, the length and weight of the vagina of the female WAD goat were 1.85 ± 0.10 cm and 0.10 ± 0.01 g, respectively. These increased significantly ($p < 0.05$) to 5.07 ± 0.39 cm and 4.04 ± 0.33 g at 28 weeks of age, respectively. The longitudinal folds and hymen were ill defined at birth but became increasingly prominent as the goats aged with the longitudinal folds extending into the vulva. Histologically, the epithelium in all age group was a stratified squamous type. At birth, the lamina propria-submucosa formed the cores of the longitudinal folds composed of loose connective tissue with numerous blood vessels. The tunica muscularis was ill defined. The tunica serosa/adventitia was a loose connective tissue containing blood vessels. The vagina showed increased development of its tissues with age. The histology of the vaginal tissues at week 16 was similar to older WAD goat. In all age groups, isolated lymphoid nodules were observed in the lamina propria-submucosa. The result suggests that the WAD goat probably attained puberty earlier than previously reported.

Key words: West Africa dwarf goat, vagina, Longitudinal folds, puberty, tunica muscularis.

INTRODUCTION

The vagina is that part of the reproductive duct which is situated between the uterine cervix cranially and the vestibule caudally and lies entirely within the pelvic cavity. The vagina serves as the copulatory organ of the female that receives the male penis during copulation and acts as a passageway for the foetus during parturition (Budras and Habel, 2003). It could also be used to diagnose some general and reproductive

diseases and abnormalities (Abalti et al., 2006; Menzies, 2010; Goncagul et al., 2012; Yotov et al., 2013). During the embryonic stage, the vagina is formed by the fusion and subsequent cannulation of the caudal end of the paramesonephric duct and the urogenital sinus (McGeady et al., 2006; Hyttel et al., 2010). The vaginal epithelium in all adult mammals is hormone dependent. The height and degree of keratinisation of the epithelium

*Corresponding author. E-mail: nwabugwu.abiaezute@unn.edu.ng. Tel: +2348033741438.

vary with stage of the estrous cycle (Noakes et al., 2001). These changes can be monitored by examining stained vaginal smears from the animal thereby establishing the stage of estrous and possibly determining the timing for controlled mating or artificial insemination. Even though some authors believe vaginal smears cytology are not useful in diagnosing the stage of the estrous cycle in ruminants except in carnivores (Hafez and Hafez, 2000; Aughey and Frye, 2001), Ola et al. (2006) and Leigh et al. (2010) described successful vaginal cytology in West African Dwarf (WAD) goats.

The West African Dwarf goats, found predominantly in the coastal areas of the country are believed to be trypano-tolerant as they thrive in tsetse fly infested areas (Oni, 2002). Knowledge of the Morphological details of the age at which the WAD goat attains puberty may be of great significance in treating and handling of vagina related defects or in the routine examination by veterinarians during fertility assessment. Available literature on the reproductive organs of domestic animal is obtained from studies on sheep and cow which are mostly of exotic breeds. This is because most description of the goat reproductive anatomy is usually made as if it is identical with the sheep (Smith, 1986; Adigwe and Fayemi, 2005). Moreover, these exotic breeds may vary from our local breeds due to differences in genetic makeup, climate and weather, vegetation and feeding regimen, disease conditions, stocking density and housing. Present work aims to describe the morphology and morphometry of the vagina of the indigenous WAD goat breed during postnatal stage.

MATERIALS AND METHODS

Forty-five (45) West African Dwarf (WAD) goats were used in present study. The female goats were obtained from traditional WAD goat breeders in Nsukka Local Government Area of Enugu state, Nigeria. Dentition was criteria for determination of age as described by Dyce et al. (2002) and Chibuzo (2006). The WAD goats were purposively assigned to ten groups of five goats each including a day old, 2 weeks, 4 weeks, 8 weeks, 12 weeks, 16 weeks, 20 weeks, 24 weeks, and 28 weeks of age. The goats were acclimatized for two weeks prior to onset of the study and were provided with feed and water ad-libitum.

Each goat was weighed with a sensitive weighing balance and euthanized by intravenous injection of sodium pentobarbitone. Following death, the vaginae were dissected out from the rest of the reproductive tract and trimmed of extraneous tissues. The length and weight of each vagina was determined. The vaginae were opened and internal features examined and noted.

Histological preparation

Segments of the vaginae were cut and fixed in Bouin's fluid for 24 h. Selected sections of the segments from each group were dehydrated in increasing concentrations of ethanol, cleared in xylene and embedded in paraffin wax. 5 μ m thick sections were obtained using a rotary microtome and were mounted on clean glass slides. The sections were stained with hematoxylin and eosin and studied under the light microscope. Images were captured

using Moticam Images Plus 2.0 digital camera.

The means and standard errors (Mean \pm S.E) of the data obtained were calculated. The data were analysed by Analysis of variance (ANOVA) and Duncan New Multiple Range Test. Significance was accepted at probability level of $p < 0.05$.

RESULTS

The vagina lay between the cervix cranially and the vulva caudally in all age group. It appeared as a long tube found entirely within the pelvic cavity and thin walled compared to the uterus. The cranial end wrapped around the *Portio vaginalis* of the cervix as the vagina fornix while the caudal end joined the vestibule of the vulva at a distinct transverse ridge - the hymen. There were longitudinal lines or ridges on the vagina mucosa that ran length-wise from the cranial end of the vagina to the vestibule through to the vulva. At birth the hymen and the longitudinal ridges were not prominent but as the animal aged, the hymen and the ridges became prominent (Figures 1 and 2). The mucosa was creamy in colour at birth but became pale as the animal aged. At birth the length and weight of the vagina of the female WAD goat increased significantly ($p < 0.05$) from 1.85 ± 0.10 cm and 0.10 ± 0.01 g to 5.07 ± 0.39 cm and 4.04 ± 0.33 g at 28 weeks of age, respectively (Table 1).

Histologically, the vaginae of the female WAD goats of all age group presented a non-keratinised stratified squamous epithelium which appeared to invaginate into the underlying connective tissue of lamina propria-submucosa. The epithelium at birth (Figure 3) appeared thicker than at week 2 and week 4 (Figure 4). The epithelium in all groups appeared to rest on the papillated lamina propria-sub mucosa which formed the numerous longitudinal folds of the mucosa. These folds had very cellular cores made up of loose connective tissue with numerous blood vessels but lacked glands in all groups. Below the lamina propria-submucosa was the tunica muscularis. At birth, the tunica muscularis was composed of an ill-defined thin inner circular and outer longitudinal smooth muscle bundles interspersed with loose connective tissue. With increase in age, the smooth muscle bundles of the tunica muscularis were defined (Figure 4). Between week 12 and 16 the histology of the vagina of the WAD goat appeared very similar to older WAD goat vagina (Figure 5). The tunica muscularis were well defined showing thicker smooth muscle layers. Surrounding the tunica muscularis externally in all age group was a loose connective tissue network of tunica serosa or adventitia containing large blood vessels which increased in size with age (Figures 4 and 5). The epithelium remained stratified squamous in all age group and appeared to increase in height at week 12 which continue to vary in height with increase in age of the goat kids (Figure 6). Varying number of lymphoid nodules with resultant lymphocytic infiltration was observed in the lamina propria-submucosa of the vaginae of all groups (Figure 6).

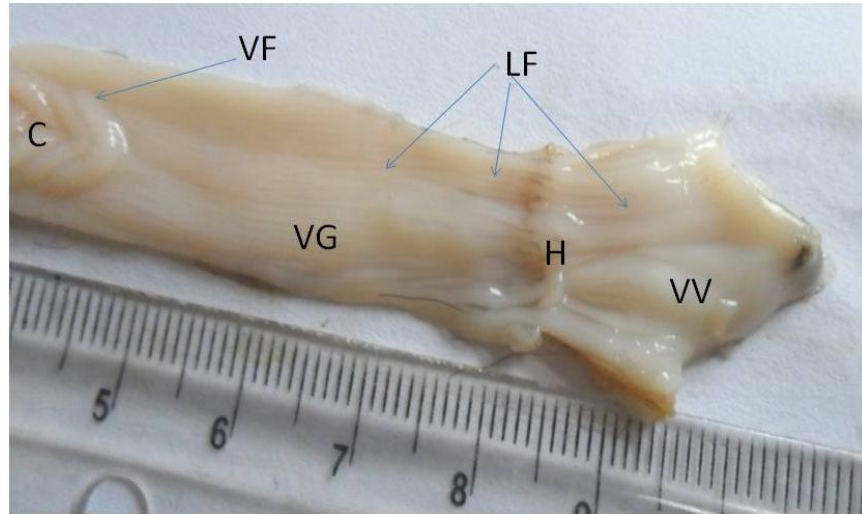


Figure 1. Gross photograph of the funnel shaped incomplete circular folds (CF) of the cervix (C), longitudinal folds (LF) of the vagina (VG) and vulva (VV) of the WAD goat at week 12. Note the hymen (H) and the fornix of the vagina (VF).

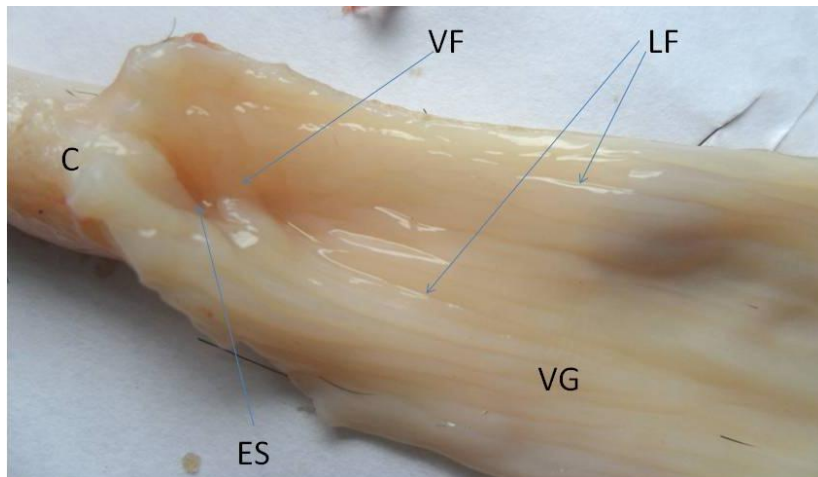


Figure 2. Gross photograph of the mucosa of the WAD goat vagina at week 28 showing longitudinal folds (LF) and the fornix of the vagina (VF). Note the external uterine ostium (ES) of the cervix (C).

Table 1. Mean length (cm) and weight (g) of wad goat Vagina during postnatal growth.

Parameter	Birth	Wk 2	Wk 4	Wk 8	Wk 12	Wk 16	Wk 20	Wk 24	Wk 28
Length (cm)	1.85 ±.10 ^a	2.14 ±.16 ^b	2.82 ±.16 ^c	3.27 ±.19 ^d	3.69 ±.21 ^e	3.85 ±.12 ^e	4.13 ±.41 ^{ef}	4.80 ±.33 ^{fg}	5.07 ±.39 ^g
Weight (g)	0.10 ±.01 ^a	0.19 ±.02 ^b	0.29 ±.02 ^c	0.95 ±.13 ^d	1.06 ±.07 ^d	1.79 ±.11 ^e	2.24 ±.24 ^f	3.59 ±.21 ^g	4.04 ±.33 ^g

Different superscripts ^{abcdef} in a row indicate significant difference ($P \leq 0.05$). Wk = Week.

DISCUSSION

Grossly, the vaginae of all age groups studied appeared

similar except in absolute length and weight which statistically increased ($p < 0.05$) as the goats aged. The WAD goat vagina was a thin walled tube and functioned

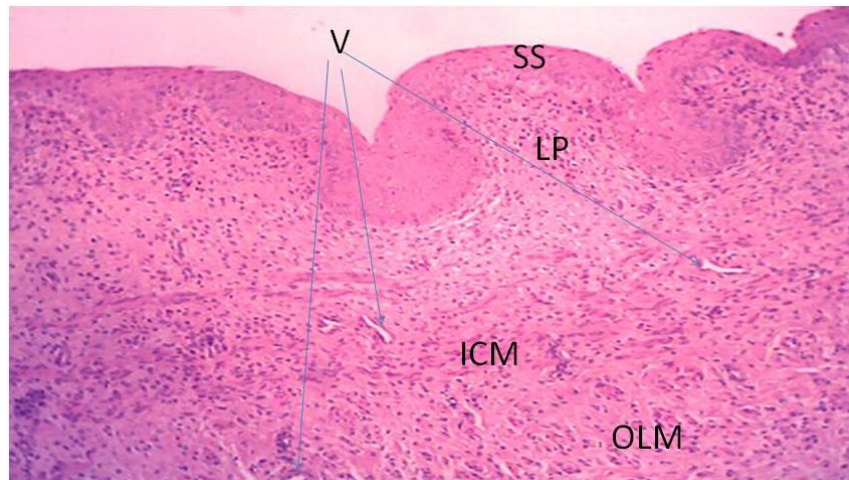


Figure 3. Cross section of vagina at birth showing papillated lamina propria-submucosa (LP) and both inner circular (ICM) and outer longitudinal (OLM) smooth muscles. Note the blood vessels (V). H & E stain. x100.

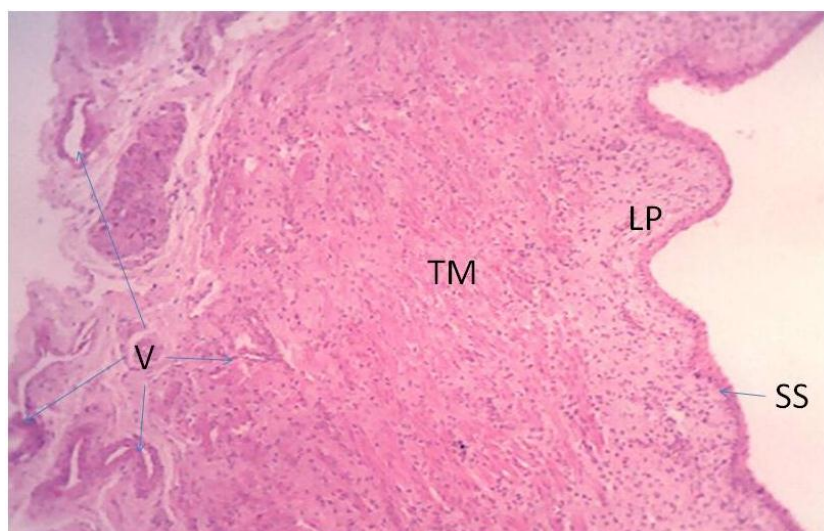


Figure 4. Photomicrograph of the WAD goat vagina at week 4 showing the lamina propria-submucosa (LP), the smooth muscles of the tunica muscularis (TM) and the numerous blood vessels (V) within the tunica serosa/adventitia (TA). Note the reduced height of the stratified squamous epithelium (SS). H & E. x100.

as described for ruminants (Budras and Habel, 2003; Frandson et al., 2009). The arched space of vagina fornix, the longitudinal folds and rugae of the vagina has been described by Constantinescu and Constantinescu (2010). These probably hold the secretions that facilitate lubrication for the smooth gliding of the penis during copulation and of the foetus during parturition. Moreover, the length-wise arrangement of the longitudinal folds in the WAD goat probably allows for the expansion needed during copulation and parturition. This inference is corroborated by Hafez and Hafez (2000). The distinct

hymen which clearly demarcated the vagina from the vestibule in the WAD goat was similar to the ewe but differed from the indistinct hymen described in cow (Budras and Habel, 2003; Kumar, 2009).

Microscopically, the vagina of all groups of the WAD goat revealed that the wall has four tissue layers similar to the histomorphology of the vagina of ruminants (Banks, 1993; Samuelson, 2007; Bacha and Bacha, 2012). The longitudinal folds and rugae of the vagina which appeared as invaginations of the epithelium into the mucosal connective tissue probably allows for

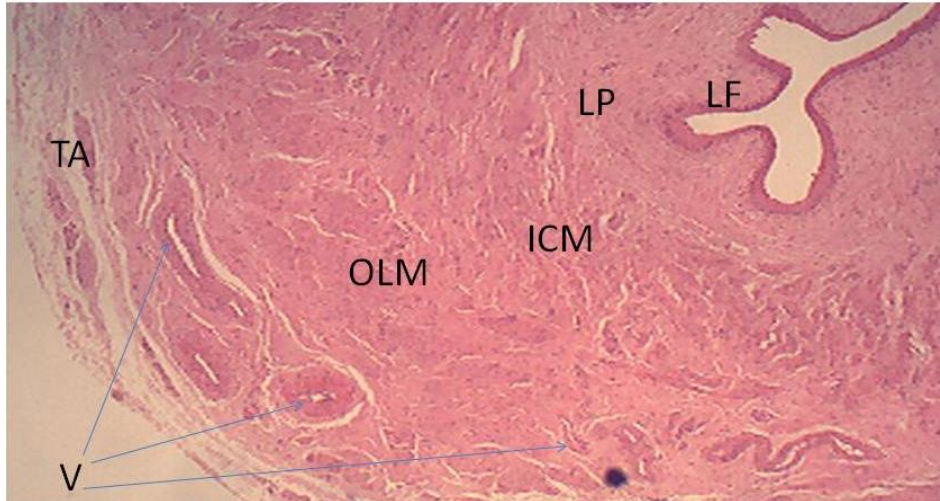


Figure 5. Cross section of vagina at week 16 showing longitudinal folds (LF) of the vagina lamina propria-submucosa (LP) and both inner circular (ICM) and outer longitudinal (OLM) smooth muscles. Note the large blood vessels (V) within the tunica serosa/adventitia (TA). H & E x40.

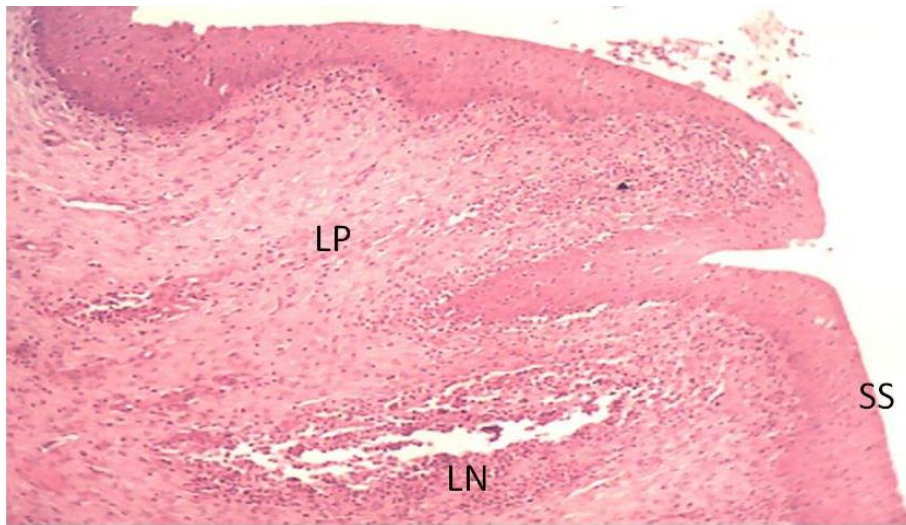


Figure 6. Photomicrograph of vagina at week 20 showing the stratified squamous epithelium (SS), lymph nodule (LN) within the lamina propria-submucosa (LP). Note the massive lymphocytic infiltration. H & E stain. x100.

expansion of the vagina during copulation and parturition as reported by Hafez and Hafez (2000). The non keratinised stratified squamous epithelium in WAD goat was probably an early adaptation to help protect the mucosa of the vagina from abrasion during coitus and parturition (Dyce et al., 2002; Samuelson, 2007).

Changes in the vaginal epithelium are gonadotrophin dependent (Banks, 1993). The greater height of the epithelium at birth than at week four suggests that the kids before birth were exposed to higher level of oestrogen which is known to induce proliferation of the

vagina epithelium. This inference is supported by reports that foetal reproductive organs are exposed to high level of maternal gonadotrophins which may be essential for normal foetal reproductive development and thus plays an important role in programming the foetus for reproductive capacity in adult life (Mellin et al., 1966; Brooks et al., 1995). This may also explain the lower height of the epithelium observed weeks after birth being due to reduced level of gonadotrophins as a result of the immaturity of the goat kids. However, at week 12 the increased height of the epithelium suggests a resumed

proliferation which may be likened to the oestrogen controlled proliferative stage seen during oestrous cycle (Aughey and Frye, 2001). The resumption of epithelial proliferation at week 12 may be evidence of early attainment of puberty in WAD goats. Although Akusu et al., (1986) reported that first estrus in WAD goats occur at 5-7 months of age, more recent authors (Wang et al., 1991; Jainudeen et al., 2000) have shown that the goat may attain puberty as early as 3-4 months of age.

The non-glandular nature of the lamina propria-submucosa which contained numerous blood vessels has been described in literature (Aughey and Frye, 2001; Samuelson, 2007; Bacha and Bacha, 2012). Lubrication of the vaginal wall during coitus and parturition may be by endometrial secretions, mucus secretions from the cervix, fluid exudates from the blood vessels and lymphatics in the walls of the vagina (described as a labyrinthine pathway) which seeps through the stratified squamous epithelium and secretions from the vulva (Papka and Williams, 1998; Hafez and Hafez, 2000; Jannini et al., 2005).

The vagina is generally known as the female organ of copulation (Dyce et al., 2002). Contaminants can easily enter the vagina during coitus, artificial insemination and through migration from the external genitalia. This may account for the varying number of lymphoid nodules and the lymphocytic infiltration observed in the lamina propria-submucosa and the epithelium. These structures act to produce immunological protection against invading organisms that might be harmful to the foetus and the reproductive system. This view agrees with report that local production of antibodies which seem to prevent microbial infection and antibodies against spermatozoa takes place in the vagina since it is more exposed to sperm antigen than other parts of the reproductive tract (Hafez and Hafez, 2000).

The tunica muscularis of the vagina in all groups comprised the inner circular smooth muscle layer and an outer longitudinal smooth muscle layer. The tunica muscularis probably aids in the contraction of the vagina when stimulated during coitus to expand and accommodate the penis and possibly aid in causing exudation of the blood vessels within the lamina propria-submucosa. It may also aid parturition and involution.

Conclusion

The result showed that the WAD goat, just like other ruminants had developed some morphological adaptation to aid the function of the vagina. The increased development of the tunica muscularis, the blood vessels and the epithelium with increase in age suggests early attainment of puberty in WAD goats than earlier reported.

Conflict of interest

The authors did not declare any conflict of interest.

REFERENCES

- Adigwe PI, Fayemi O (2005). A Biometric study of the reproductive tract of the Red Sokoto (Maradi) goats of Nigeria. *Pak. Vet. J.* 25(3):149-150.
- Akusu MO, Osuagwuh AIA, Akpokodje JU, Egbunike GN (1986). Ovarian Activities of the West African Dwarf Goat (*Capra hircus*) during oestrus. *J. Reprod. Fertil.* 78:459-462. <http://dx.doi.org/10.1530/jrf.0.0780459>
- Aughey E, Frye LF (2001). *Comparative Veterinary Histology*. Manson Publishing, London. pp. 183-214. <http://dx.doi.org/10.1201/b15184-13>
- Bacha Jr JW, Bacha ML (2012). *Colour Atlas of Veterinary Histology*, 3rd ed. Wiley - Blackwell. United Kingdom. pp. 243-265.
- Banks WJ (1993). *Applied Veterinary Histology*, 3rd ed. Mosby Incorporated, Missouri. pp. 446-468.
- Brooks AN, McNeilly AS, Thomas GB (1995). Role of GnRh in the ontogeny and regulation of the feto-hypothalamo-pituitary axis in sheep. *J. Reprod. Fertil.* 49:163-175
- Budras K, Habel RE (2003). Female genital organ in: *Bovine Anatomy, an illustrated text*. SchluterscheGmbH & Co. KG. Hannover, Germany. pp. 86-88.
- Chibuzo AG (2006). *Ruminant Dissection Guide: A regional approach in goat*. 2nd ed. Beth-Bekka Academic Publishers, Maiduguri, Nigeria. pp. 59-60.
- Constantinescu GM, Constantinescu IA (2010). Functional anatomy of the goat, in: Solaiman GS. (Ed) *Goat Science and Production*. Blackwell Publishing, Iowa. pp. 89-137.
- Dyce KM, Sack WO, Wensing CJG. (2002). *Veterinary Anatomy*, 3rd ed. W. B. Saunders Company, Philadelphia. pp. 637-639.
- Frandsen RD, Wilke WL, Fails AD (2009). *Anatomy of the Female Reproductive System in: Anatomy and Physiology of Farm Animals*. 7th edition. pp. 421-427.
- Goncagul G, Seyrek IK, Kumru IH, Seyrek ID (2012). Prevalence and accompanying signs of pneumovagina and urovagina in dairy cows in Southern Marmara region. *Tierarztl Prax Ausg G Grosstiere Nutztiere* 40(6):359-366.
- Hafez B, HafezESE.(2000). Anatomy of female reproduction, in: Hafez ESE, Hafez B (Eds). *Reproduction in farm animals*. 7th ed. Lippincott Williams and Wilkins, Philadelphia. pp. 13-29.
- Hyttel P, Sinowatz F, Vejlsted M (2010). Development of the urogenital system in: *Essentials of Domestic Animal Embryology*. Saunders Elsevier. Sydney. pp. 252-284.
- Jainudeen MR, Wahid H, Hafez ESE (2000). *Sheep and Goats in: Hafez ESE, Hafez B. (Eds), Reproduction in Farm Animals*. 7th ed. Lippincott Williams and Wilkins, Philadelphia. pp. 170-181.
- Jannini EA, d'Amati G, Lenzi A (2005). Histology and immunohistochemical studies of female genital tissues in: Goldstein I, Meston CM, Davis S, Traish A. (Eds) *Women's sexual function and dysfunction: study, diagnosis and treatment*. CRC Press ebook. pp. 125-133. <http://dx.doi.org/10.1201/b14618-19>
- Kumar P (2009). *Applied Veterinary Gynaecology and Obstetrics*. International Book Distribution Co. India. pp. 3-20.
- Leigh OO, Raheem AK, Oluwadamilare OJA (2010). Improving the reproductive efficiency of the goat: Vaginal cytology and vulvar biometry as predictors of synchronized estrus/breeding time in west african dwarf goat. *Int. J. Morphol.* 28(3): 923-928. <http://dx.doi.org/10.4067/S0717-95022010000300042>
- McGeady TA, Quinn PJ, FitzPatrick ES, Ryan MT, Cahalan S. (2006). Male and Female Reproductive Systems in: *Veterinary Embryology*. Blackwell Publishing. pp. 244 -267.
- Mellin TN, Erb W, Estergreen VLJ (1966). Urinary excretion of oestrogen by the bovine before and after parturition. *J. Anim. Sci.* 25:955-957.
- Menzies PI (2010). Control of important causes of infectious abortion in sheep and goats. *Vet. Clin. Food Anim.* 27:81-93. <http://dx.doi.org/10.1016/j.cvfa.2010.10.011>
- Noakes DE, Parkinson TJ, England GCW (2001). *Arthur's Veterinary Reproduction and Obstetrics*. 8th ed. Saunders Elsevier, Philadelphia. pp. 3-51.
- Ola SI, Sanni WA, Egbunike GN.(2006). Exfoliative vaginal cytology during the oestrus cycle of West African dwarf goats. *Reprod. Nutr. Dev.* 46:87-95. <http://dx.doi.org/10.1051/rnd:2005067>

- Oni OO (2002). Breeds and Genetic Improvement of Small Ruminants (Sheep and Goats), in: Lakpini C.A.M., Adamu A.M., Ehoche, O.W. and Gefu J.O. (Eds.) Manual for small ruminant production in Nigeria.
- Papka ER, Williams JS (1998). Vagina, in: Ernest K, Jimmy DN. (Eds). Encyclopedia of Reproduction. Academic Press, San Diego California. Vol. 4. pp.961-968.
- Samuelson AD (2007). Textbook of Veterinary Histology. Saunders, Missouri. pp. 443-486.
- Smith MC (1986). Caprine Reproduction, in: Marrow DA. (Ed). Current Therapy in Theriogenology. W. B. Saunders. Philadelphia, USA. pp. 577-579.
- Wang J, Duan E, Huang Q, Hao Z, Wu H (1991). Reproductive Performance of the Saanen goat in china. Proceedings of the final co-ordination meeting, Perth, Australia, 20–24 February 1989 on improving sheep and goat productivity with the aid of nuclear techniques, International Atomic Energy Agency, Vienna, Austria.
- Yotov S, Atanasov A, Antonov A, Karadaev M (2013). Post-oestral vaginal prolapsed in a non-pregnant heifer (a case report). Trakia J. Sci.1: 95-101.



Journal of Cell and Animal Biology

Related Journals Published by Academic Journals

- *International Journal of Genetics and Molecular Biology*
- *Journal of Microbiology and Antimicrobials*
- *International Journal of Biodiversity and Conservation*
- *Journal of Bacteriology Research*
- *Journal of Developmental Biology and Tissue Engineering*
- *Journal of Evolutionary Biology Research*

academicJournals